

## ER1426 Epoxy Resin

ER1426 is a very low viscosity unfilled, two-part epoxy resin, designed for powder bonding and impregnation applications. The standard colour is water-white but other colours could be made available if required.

- Exceptionally low viscosity; ideal for applications with complex geometries and small spacing
- Clear system; allows visual inspection through the encapsulation resin
- High tensile strength; good mechanical protection
- Long useable life; ideal for impregnation applications

<b>Approvals:</b>	<b>RoHS Compliant (2015/863/EU):</b>	<b>Yes</b>
	<b>UL Approval:</b>	<b>No</b>

### Typical Properties

Liquid Properties:	Base Material	Epoxy
	Density Part A - Resin (g/ml)	1.05
	Density Part B - Hardener (g/ml)	0.92
	Part A Viscosity (mPa s 23°C)	200
	Part B Viscosity (mPa s 23°C)	25
	Mixed System Viscosity (mPa s 23°C)	100
	Mix Ratio (Weight)	4.00:1
	Mix Ratio (Volume)	3.40:1
	Usable Life (20°C)	120 minutes
	Cure Time (40 °C)	24 hours
	Cure Time (60 °C)	8 hours
	Cure Time (100 °C)	2 hours
	Colour Part A - Resin	Water White
	Colour Part B - Hardener	Water White
	Storage Conditions	Dry Conditions: Above 15°C, Below 35°C
	Shelf Life	24 Months (Resin packs – 12 months)
Cured System:	Cured Density (g/ml)	1.05
	Temperature Range (°C)	-40 to +120
	Max Temperature Range (Short Term (°C)/30 Mins) (Application and Geometry Dependent)	+140
	Dielectric Strength (kV/mm)	11
	Volume Resistivity (ohm-cm)	10 <sup>14</sup>

#### Copyright Electrolube 2013

All information is given in good faith but without warranty. Properties are given as a guide only and should not be taken as a specification.

Electrolube cannot be held responsible for the performance of its products within any application determined by the customer, who must satisfy themselves as to the suitability of the product.

Ashby Park, Coalfield Way,  
Ashby de la Zouch,  
Leicestershire LE65 1JR

T +44 (0)1530 419 600

F +44 (0)1530 416 640

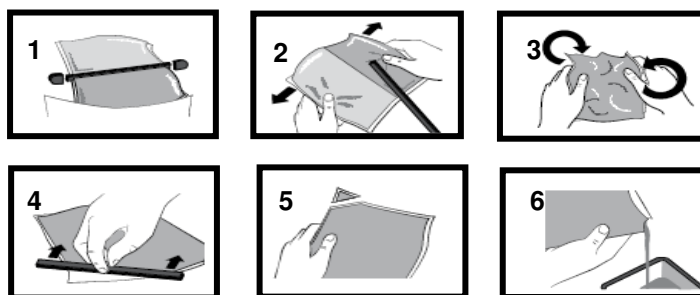
BS EN ISO 9001:2008  
Certificate No. FM 32082

Shore Hardness	D85
Colour (Mixed System)	Water White
Flame Retardancy	No
Tensile Strength (MPa)	70
Tensile Modulus (MPa)	3000
Flexural Strength (MPa)	100
Deflection Temperature (°C)	90
Coefficient of Expansion (ppm/°C)	100
Power Factor (@ 25°C)	0.03
Permittivity @ 50 Hz (@ 25°C)	4.0

## **Mixing Procedures**

### **Resin Packs**

When in Resin pack form, the resin and hardener are mixed by removing the clip and moving the contents around inside the pack until thoroughly mixed. To remove the clip, remove both end caps, grip each end of the pack and pull apart gently. By using the removed clip, take special care to push unmixed material from the corners of the pack. Mixing normally takes from three to four minutes depending on the skill of the operator and the size of the pack. Both the resin and hardener are evacuated prior to packing so the system is ready for use immediately after mixing. The corner may be cut from the pack so that it may be used as a simple dispenser. There is also a YouTube video ([Epoxy Mixing Instructions](#)) available on the Electrolube channel to show the mixing process.



### **Bulk Mixing**

When mixing, care must be taken to avoid the introduction of excessive amounts of air. Automatic mixing equipment is available which will not only mix both the resin and hardener accurately in the correct ratio but do this without introducing air. Containers of Part A (Resin) and Part B (Hardener) should be kept sealed at all times when not in use to prevent the ingress of moisture. Bulk material must be thoroughly mixed before use. Incomplete mixing or use of the wrong mix ratio will result in erratic or partial curing.

### **Additional Information**

- Cleaning:** It is far easier for machines & containers to be cleaned before the resin has been allowed to cure. Electrolube's RRS is suitable for cleaning machines and containers and cured resin may be slowly softened and removed by soaking in our RRS.
- Storage:** When storing under very cold conditions, the hardener may crystallise. If this occurs, simply warm (40°C) the container gently until all crystals have re-melted.
- Health & Safety:** Always refer to the Health & Safety data sheet before use. These can be downloaded from [www.electrolube.com](http://www.electrolube.com)

Revision 3: Mar 2019

#### **Copyright Electrolube 2013**

All information is given in good faith but without warranty. Properties are given as a guide only and should not be taken as a specification.

Electrolube cannot be held responsible for the performance of its products within any application determined by the customer, who must satisfy themselves as to the suitability of the product.

Ashby Park, Coalfield Way,  
Ashby de la Zouch,  
Leicestershire LE65 1JR

**T** +44 (0)1530 419 600

**F** +44 (0)1530 416 640

BS EN ISO 9001:2008  
Certificate No. FM 32082